

# CONTRIBUTOR

LOVES FOR THE BENEFIT OF OTHERS

SELF-CONTROLLED

HUMBLE

COMPASSIONATE

PATIENT

GENUINE

ALTRUISTIC

KIND

EMPATHETIC

GRATEFUL

TEACHABLE

NOTICES  
OTHERS

SERVANT

GENEROUS

LOYAL

BUILDS UP  
OTHERS

A CONNECTOR

LOVING

WANTS TO  
SERVE OTHERS

MOMENTUM IS TOWARD  
LOVE, CARING, SERVING, AND GIVING.



# CONSUMER

LOVES FOR SELF-BENEFIT

DISTRACTOR

DISHONEST

TRANSACTIONAL

NARCISSISTIC BEHAVIORS

STRATEGIC

ENTITLED

CAN BE CHARMING

MANIPULATIVE

HURTFUL

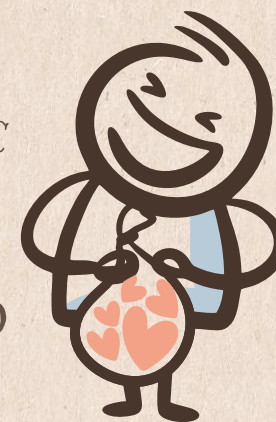
SELFISH

CAN APPEAR:

- HUMBLE
  - PATIENT
  - GENEROUS
  - KIND
  - FRIENDLY
  - HELPFUL
  - NICE
- BUT.... IT'S NOT  
OUT OF LOVE  
FOR OTHERS.

TRIES TO GET  
SOMETHING  
FROM OTHERS

MOMENTUM IS TOWARD  
GETTING, TAKING, AND USING.



VS.