

BRIO'S

PERFUME PARTY PACK



YOUR GUIDE

TO HOSTING THE PERFECT PERFUME PARTY!

BY THE BRIO TEAM

BRIO'S

PERFUME PARTY PACK

INSIDE:

3 WHY A PERFUME PARTY?

3 HOW TO HOST A PERFUME PARTY

4 PARTY PLANNER

5 INVITATIONS

6 HOW TO MAKE PERFUME

7 PERFUME TYPES

8 THE NOTE SYSTEM

9 NOTE CHART

11 BRIO'S BASIC BLENDS

12 PARTY BLEND CARDS

13 SHOPPING LISTS

14 SHOPPING & SUPPLIES

15 SAFETY

15 MORE THAN JUST A GUIDE



WHY A PERFUME PARTY?

Who doesn't love an awesome time with besties, scrumptious snacks and creating crafts that smell absolutely amazing? Perfume parties are like the ultimate friend festivity—they're super fun and totally chill, and you'll end up with great smelling gifts for your pals.

Use this guide to help plan your party, and customize it as you see fit to make it uniquely yours.



HOW TO HOST A PERFUME PARTY

Use the Party Planner on the next page to help organize all the essential details for starting the ultimate friend festivity.

Begin the prep work by choosing a date, time and location, decide who to invite, what food you want and what supplies you'll need for the big day.

After gathering the party details, send out your invitations at least three weeks before the party date. To make it easy, *Brio* created beautifully designed, printable invitations on page 5—a perfect option for a personal, hand-delivered approach.

For a quick and simple option, *Brio* also created a digital invitation. Simply download it in this kit, and share with your friends via text.

Now, start gathering all your supplies, print the decorations provided in this kit and begin preparing for the ultimate friend festivity.

YOU'RE INVITED TO A PERFUME PARTY.

NAME

DATE:

TIME:

WHERE:

PLEASE BRING:

RSVP:

YOU'RE INVITED TO A PERFUME PARTY.

NAME

DATE:

TIME:

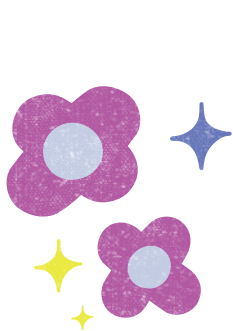
WHERE:

PLEASE BRING:

RSVP:



CUT ON DOTTED LINES / FOLD ON SOLID LINE



INVITATIONS

Print an invitation for each guest, fill out the party details, and hand deliver for a sweet, personal touch!

DOWNLOAD THE DIGITAL INVITATIONS IN THIS PACK TO SEND VIA TEXT.

OR DM US ON INSTAGRAM TO GET A DIGITAL INVITATION SENT DIRECTLY TO YOU.

TIP
DIGITAL INVITATIONS CAN BE A GREAT WAY TO REMIND YOUR GUESTS WHEN THE PARTY IS GETTING CLOSE!

PERFUME TYPES

Use these directions to make your desired perfume type.

SOLIDS

MATERIALS

- ½ tablespoon beeswax pellets
- 1 heatproof container, preferably with a spout
- 1 small pot
- 30-50 drops of your favorite essential oil blend
- 1 small ceramic or glass bowl
- 1 cloth potholder
- 1 stainless steel spoon
- 1 tablespoon jojoba oil
- 15-milliliter container

DIRECTIONS

1. Melt beeswax in a double boiler. To do this, put beeswax pellets in a heatproof container. Fill a small pot halfway with water. Place the small heatproof container in the center of the pot and boil.
2. While the beeswax is melting, mix your preferred essential oil blend in a small bowl.
3. Once the beeswax has melted, use a potholder to remove it from the burner. With the stainless steel spoon, stir in the jojoba oil, and then the essential oil blend.
4. Pour the mixture into a 15-milliliter container. Let cool and set for at least 2 hours.

ROLL-ONS

MATERIALS

- 1 mini funnel
- 15-20 drops of your favorite essential oil blend
- 3-milliliter roll-on container
- 1 bottle of jojoba oil

DIRECTIONS

1. Use the mini funnel to drop the essential oils into the container.
2. Add the jojoba oil to fill the remainder of the container. (This is your carrier oil.)
3. Secure the roller-ball cap on the container.
4. Gently shake, and you're ready to roll!

SPRAYS

MATERIALS

- 10 drops jojoba oil
- 35-50 drops of your favorite essential oil blend
- 10-milliliter spray bottle
- Witch hazel
- 1 mini funnel (optional but helpful)

DIRECTIONS

1. Add 10 drops of jojoba oil and your essential oil blend to the spray bottle.
2. Fill the remaining bottle with witch hazel, and screw on the lid.
3. Gently shake, and you're ready to spray!

DOWNLOAD
CUSTOM
LABELS
AVAILABLE
IN THIS PACK
FOR YOUR
ROUND,
SOLID
PERFUME
CONTAINERS.



TIP

THESE KITCHEN ITEMS ARE AFFORDABLE AND EASY TO FIND AT YOUR LOCAL THRIFT STORE.

TIPS

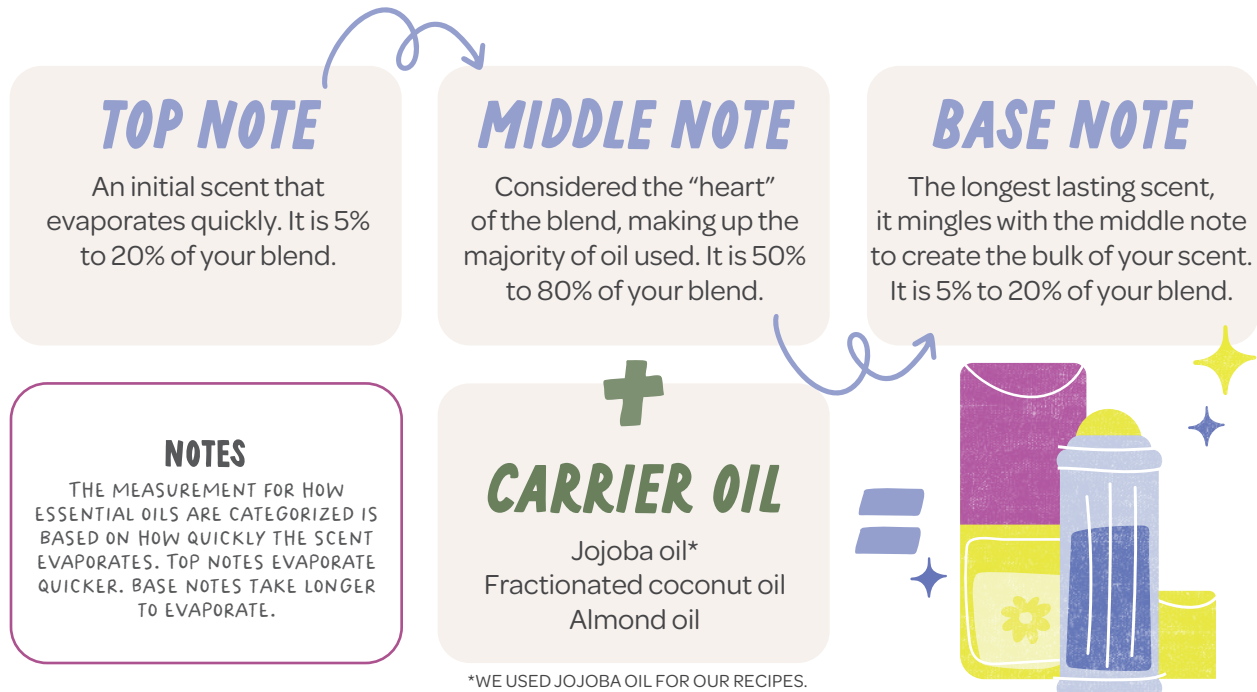
FOR BEST RESULTS, GENTLY SHAKE BEFORE EACH APPLICATION.

USE SMALLER OR LARGER SPRAY AND ROLL-ON BOTTLES. SIMPLY ADJUST PROPORTIONATELY TO USING MORE OR LESS OF THE OILS.

IF YOUR PERFUME TURNS OUT TO BE TOO STRONG OR NOT STRONG ENOUGH FOR YOUR LIKING, ADJUST THE AMOUNT OF ESSENTIAL OILS TO FINE-TUNE THE INTENSITY TO YOUR PREFERENCE.

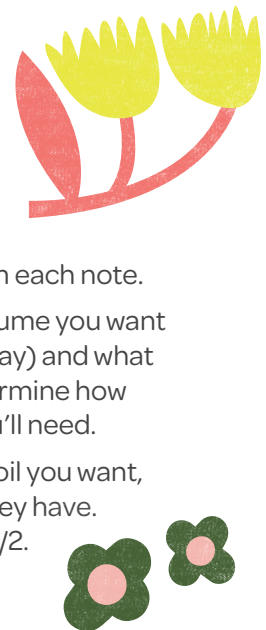
THE NOTE SYSTEM

To make perfume, you'll use a blend of oils, one oil from each note, combined with a carrier oil such as jojoba oil, fractionated coconut oil or almond oil.



TO START:

1. Pick one essential oil from each note.
2. Decide what kind of perfume you want to make (solid, roll-on or spray) and what size bottle you'll use to determine how many essential oil drops you'll need.
3. Divvy-up the amount of oil you want, depending on what notes they have. A common blend ratio is 2/5/2.
4. Blend, blend, blend!



NOTE CHART

Use this chart to help determine your essential oil notes.
Fill in the empty spaces with your favorite essential oils.

TOP NOTES	MIDDLE NOTES	BASE NOTES
Bergamot	Black Pepper	Cedar
Lemongrass	Chamomile	Ginger
Lavender*	Clary Sage	Patchouli
Grapefruit*	Lavender*	Vanilla
Eucalyptus	Clove	Sandalwood
Clary Sage	Geranium*	Rose
Cinnamon	Cypress	Peppermint
Basil	Pine	Cinnamon
Neroli*	Rosemary	Frankincense
Peppermint	Ylang Ylang	Jasmine*
Tea Tree	Jasmine*	Clove
Thyme	Oregano	Gardenia*
Lime	Chamomile	Dark Tea
Lemon	Honeysuckle	White Tea
Sage	Gardenia*	
Juniper Berry	Magnolia	
Sweet Orange	Tulip	
Gardenia*	Plum Blossom	
Lily	Cherry Blossom	
Freesia	Lilac	
Wormwood	Fir	
Mint	Spearmint	

TIP
TO FIND AN ESSENTIAL OIL'S NOTE CLASSIFICATION, GOOGLE: "WHAT NOTE IS THE ESSENTIAL OIL"

*Some essential oils have more than one note.

BRIO'S BASIC BLENDS

SPICY

NOTES

ESSENTIAL OIL	OIL DROPS
T BERGAMONT	15 ♥ 5 ♥ 15
M BLACK PEPPER	25 ♥ 17 ♥ 25
B DARK TEA	10 ♥ 3 ♥ 10
	15 ML • SOLID
	3 ML • ROLL-ON
	10 ML • SPRAY

EARTHY

NOTES

ESSENTIAL OIL	OIL DROPS
T CLARY SAGE	15 ♥ 5 ♥ 15
M CLOVE	20 ♥ 15 ♥ 20
B DARK TEA	15 ♥ 5 ♥ 15
	15 ML • SOLID
	3 ML • ROLL-ON
	10 ML • SPRAY

FLORAL

NOTES

ESSENTIAL OIL	OIL DROPS
T FREESIA	15 ♥ 5 ♥ 15
M HONEYSUCKLE	25 ♥ 17 ♥ 25
B ROSE	10 ♥ 3 ♥ 10
	15 ML • SOLID
	3 ML • ROLL-ON
	10 ML • SPRAY

SWEET

NOTES

ESSENTIAL OIL	OIL DROPS
T NEROLI	15 ♥ 5 ♥ 15
M GARDENIA	25 ♥ 17 ♥ 25
B WHITE TEA	10 ♥ 3 ♥ 10
	15 ML • SOLID
	3 ML • ROLL-ON
	10 ML • SPRAY

EPIC

NOTES

ESSENTIAL OIL	OIL DROPS
T LEMON	17 ♥ 7 ♥ 17
M JASMINE	20 ♥ 15 ♥ 20
B GINGER	15 ♥ 5 ♥ 15
	15 ML • SOLID
	3 ML • ROLL-ON
	10 ML • SPRAY

FRESH

NOTES

ESSENTIAL OIL	OIL DROPS
T SWEET ORANGE	15 ♥ 5 ♥ 15
M CHERRY BLOSSOM	30 ♥ 20 ♥ 30
B GINGER	10 ♥ 3 ♥ 10
	15 ML • SOLID
	3 ML • ROLL-ON
	10 ML • SPRAY



PARTY BLEND CARDS

Use these cards to create your own custom blends.

<div style="border: 1px solid #ccc; border-radius: 15px; padding: 5px; margin-bottom: 5px;"></div> <table border="1" style="width: 100%; border-collapse: collapse;"> <thead> <tr> <th style="width: 15%;">NOTE</th> <th style="width: 55%;">ESSENTIAL OIL</th> <th style="width: 30%;"># OF OIL DROPS</th> </tr> </thead> <tbody> <tr> <td style="height: 100px;"></td> <td></td> <td></td> </tr> </tbody> </table>	NOTE	ESSENTIAL OIL	# OF OIL DROPS				<div style="border: 1px solid #ccc; border-radius: 15px; padding: 5px; margin-bottom: 5px;"></div> <table border="1" style="width: 100%; border-collapse: collapse;"> <thead> <tr> <th style="width: 15%;">NOTE</th> <th style="width: 55%;">ESSENTIAL OIL</th> <th style="width: 30%;"># OF OIL DROPS</th> </tr> </thead> <tbody> <tr> <td style="height: 100px;"></td> <td></td> <td></td> </tr> </tbody> </table>	NOTE	ESSENTIAL OIL	# OF OIL DROPS				<div style="border: 1px solid #ccc; border-radius: 15px; padding: 5px; margin-bottom: 5px;"></div> <table border="1" style="width: 100%; border-collapse: collapse;"> <thead> <tr> <th style="width: 15%;">NOTE</th> <th style="width: 55%;">ESSENTIAL OIL</th> <th style="width: 30%;"># OF OIL DROPS</th> </tr> </thead> <tbody> <tr> <td style="height: 100px;"></td> <td></td> <td></td> </tr> </tbody> </table>	NOTE	ESSENTIAL OIL	# OF OIL DROPS			
NOTE	ESSENTIAL OIL	# OF OIL DROPS																		
NOTE	ESSENTIAL OIL	# OF OIL DROPS																		
NOTE	ESSENTIAL OIL	# OF OIL DROPS																		
<div style="border: 1px solid #ccc; border-radius: 15px; padding: 5px; margin-bottom: 5px;"></div> <table border="1" style="width: 100%; border-collapse: collapse;"> <thead> <tr> <th style="width: 15%;">NOTE</th> <th style="width: 55%;">ESSENTIAL OIL</th> <th style="width: 30%;"># OF OIL DROPS</th> </tr> </thead> <tbody> <tr> <td style="height: 100px;"></td> <td></td> <td></td> </tr> </tbody> </table>	NOTE	ESSENTIAL OIL	# OF OIL DROPS				<div style="border: 1px solid #ccc; border-radius: 15px; padding: 5px; margin-bottom: 5px;"></div> <table border="1" style="width: 100%; border-collapse: collapse;"> <thead> <tr> <th style="width: 15%;">NOTE</th> <th style="width: 55%;">ESSENTIAL OIL</th> <th style="width: 30%;"># OF OIL DROPS</th> </tr> </thead> <tbody> <tr> <td style="height: 100px;"></td> <td></td> <td></td> </tr> </tbody> </table>	NOTE	ESSENTIAL OIL	# OF OIL DROPS				<div style="border: 1px solid #ccc; border-radius: 15px; padding: 5px; margin-bottom: 5px;"></div> <table border="1" style="width: 100%; border-collapse: collapse;"> <thead> <tr> <th style="width: 15%;">NOTE</th> <th style="width: 55%;">ESSENTIAL OIL</th> <th style="width: 30%;"># OF OIL DROPS</th> </tr> </thead> <tbody> <tr> <td style="height: 100px;"></td> <td></td> <td></td> </tr> </tbody> </table>	NOTE	ESSENTIAL OIL	# OF OIL DROPS			
NOTE	ESSENTIAL OIL	# OF OIL DROPS																		
NOTE	ESSENTIAL OIL	# OF OIL DROPS																		
NOTE	ESSENTIAL OIL	# OF OIL DROPS																		



TIP
 DOWNLOAD THE TABLETOP BLEND CARDS FOR A CARD THAT SITS ON YOUR COUNTER TOP, MAKING IT EASY TO READ AND USE.

SHOPPING LISTS

Cut out the list for the type of perfume you want to make for a pre-filled shopping list.

SOLID PERFUME

SHOPPING LIST

- ESSENTIAL OILS
- BEESWAX PELLETS
- JOJOBA OIL
- SMALL ROUND TIN



TIP
AN ESSENTIAL OIL VARIETY PACK IS GOOD FOR PROVIDING A RANGE OF OILS AT A REASONABLE PRICE.

ROLL-ON PERFUME

SHOPPING LIST

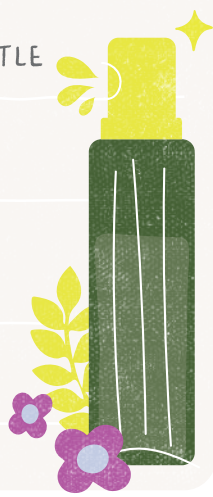
- ESSENTIAL OILS
- JOJOBA OIL
- MINI FUNNEL
- ROLLER CONTAINER



SPRAY PERFUME

SHOPPING LIST

- ESSENTIAL OILS
- WITCH HAZEL
- JOJOBA OIL
- MINI FUNNEL
- SPRAY BOTTLE



TIP
LOOK FOR THERAPEUTIC GRADE ESSENTIAL OILS. THESE ARE CONSIDERED TO BE THE PUREST OF ALL ESSENTIAL OIL GRADES.

SHOPPING & SUPPLIES

Use this sheet to gather your thoughts and organize what you need for your party.

PERFUME SUPPLIES TO PURCHASE

PERFUME SUPPLIES TO GATHER AROUND THE HOUSE

FOOD TO PURCHASE

FRIENDS ARE BRINGING . . .

DECOR I NEED:

DOWNLOAD THESE ADDITIONAL ITEMS

- DIGITAL INVITATIONS
- TABLETOP BLEND CARDS
- LABELS
- WALLPAPERS
- POSTERS
- BANNERS
- SPOTIFY PLAYLIST
- PERFUME TEST PAPERS



SAFETY

Some essential oils can irritate the skin, and some skin is more sensitive than others; therefore, please follow the safety tips when wearing your own perfume.

KEEP ALL OILS AWAY FROM YOUR EYES AND MOUTH.

TEST A SMALL PORTION OF THE PERFUME ON YOUR WRIST. IF ANY IRRITATION APPEARS, STOP IMMEDIATELY.

BE CAREFUL USING HOT WAX WHEN MAKING SOLID PERFUME. IT CAN EASILY BURN YOUR SKIN.

IF YOU HAVE AN ALLERGIC REACTION, STOP USE IMMEDIATELY.

BECAUSE DIY PERFUME HAS NO PRESERVATIVES, ONLY USE FOR 3-6 MONTHS.

MORE THAN A GUIDE

Check out these items included in the Perfume Party Pack.



WALLPAPERS



PARTY DECOR



DIGITAL INVITES



STICKERS & LABELS



GIFT TAGS



SPOTIFY PLAYLIST

FIND ALL THESE PRODUCTS AND MORE AT



[BRIOMAGAZINE.COM/FREEBIES](https://www.briomagazine.com/freebies)



@BrioMagazine

Follow us on
Instagram for
more faith,
encouragement,
crafts and fun.