



---

# Jewelry Box

---

P A T T E R N

# Jewelry Box

Make an elegant case with these quick-and-easy steps.

## Print, cut and fold

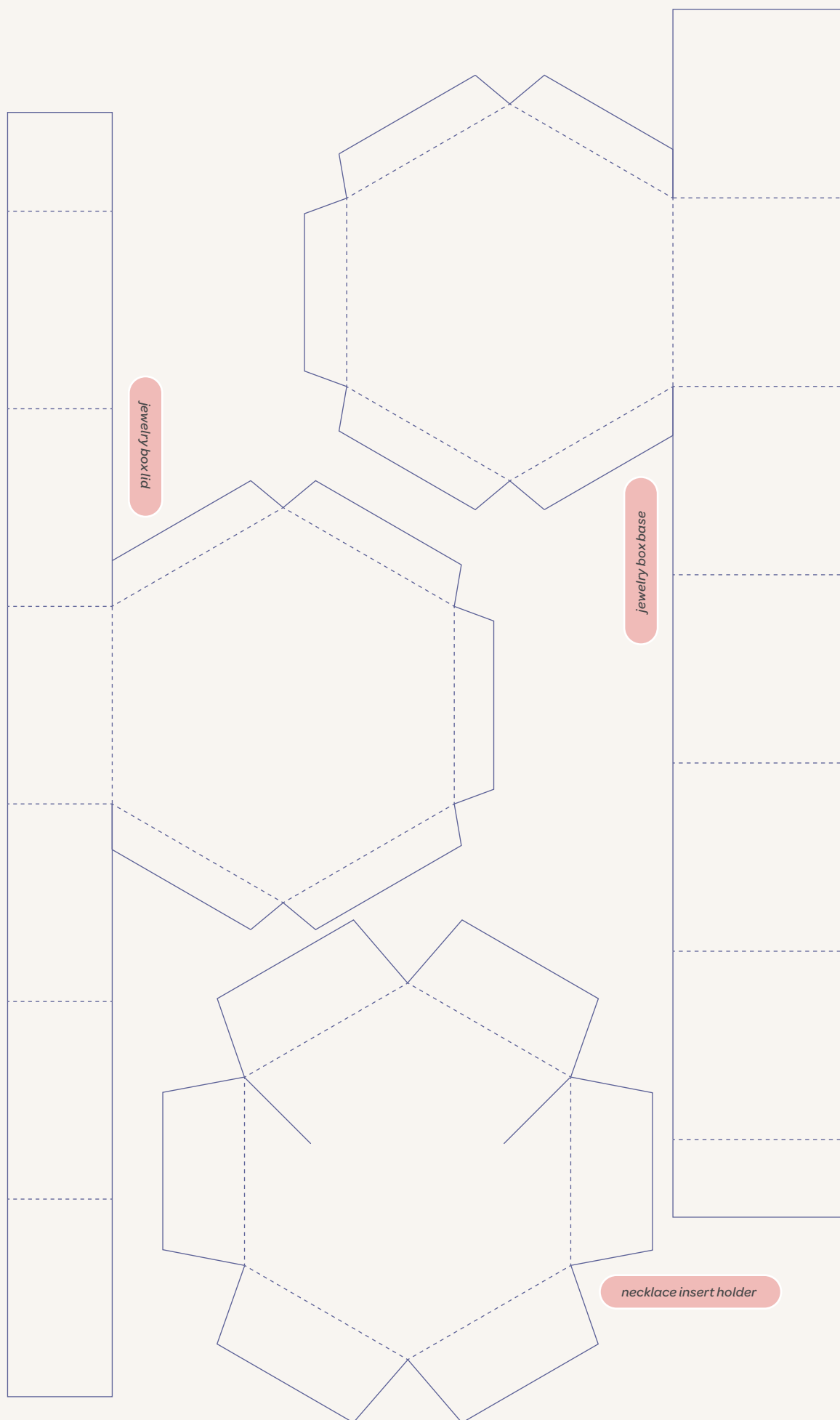
1. Print out pages two and three double sided.
2. Cut along the straight lines and fold along dashed lines.

## Base and lid

3. Attach each small flap on the base to the bottom of the inside of the body. Wrap around so all folds line up. Attach ends—short end to the inside—when they overlap.
4. For the lid, repeat steps one and two. Place a bow on top.

## Insert

5. Place necklace chain in each cut.
6. Slide insert into the box and cover with the lid.









We hope you've enjoyed  
this download from *Brio*!



For more inspiring and encouraging content,  
subscribe to *Brio* at [BrioMagazine.com/Shop](https://BrioMagazine.com/Shop).